



*Japanese Bird Art, 1950 to present day*

**Part 1**

**Woodblock  
prints**

**by 100 artists**

## Introduction

For hundreds of years the Japanese have used woodblock printing to produce printed art. To make an art print the picture design was first outlined on the surface of a block of wood. Areas surrounding this outline were then chiseled away. Next, ink was applied to the outline, followed by a piece of paper, and the back of the paper was rubbed to transfer ink to paper. To make a multi-colored print the piece of paper was placed sequentially on a series of wooden blocks each carved and inked differently to show a particular portion of the design.

The first woodblock-printed **bird** art was made in the early 18<sup>th</sup> century. These art prints were sold individually to provide a relatively inexpensive form of visual entertainment and they continue to be produced today for the same purpose. The number of artists who used woodblock printing to make bird art has increased substantially from the 18<sup>th</sup> to the 20<sup>th</sup> century, as shown in Table 1.

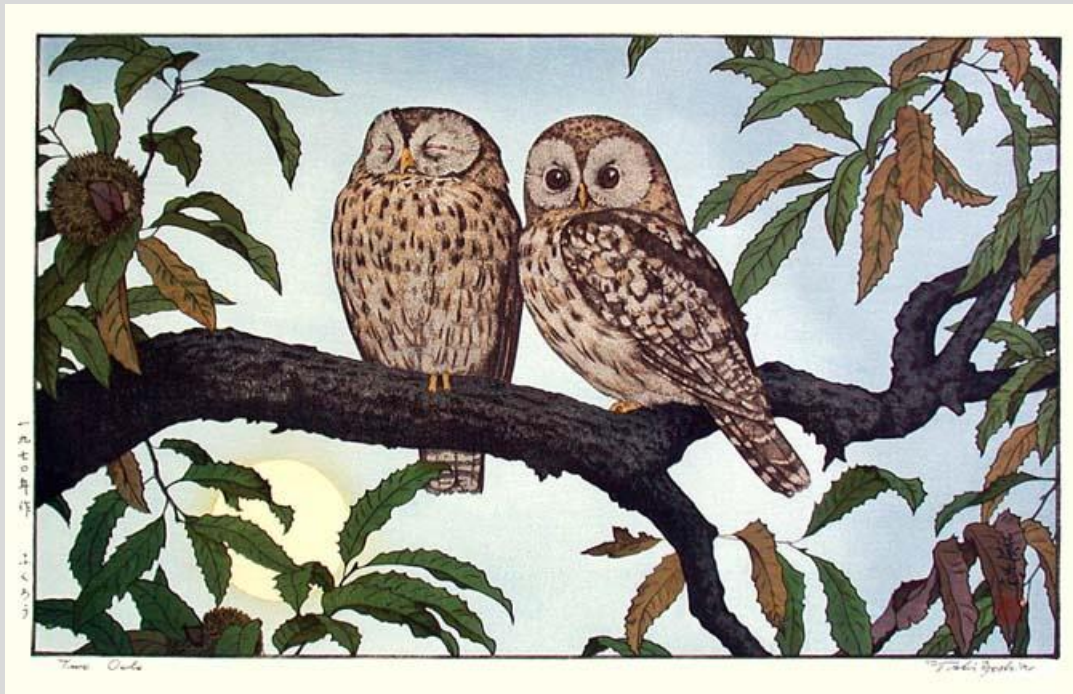
Table 1: Approximate number of Japanese artists making woodblock-printed bird prints which were sold individually (as opposed to prints sold together in a book) during sixty-year intervals between 1710 and 2009.

60-year interval	1710- 1769	1770- 1829	1830- 1889	1890- 1949	1950- 2009
Approximate number of Japanese artists	15	30	20	100	200

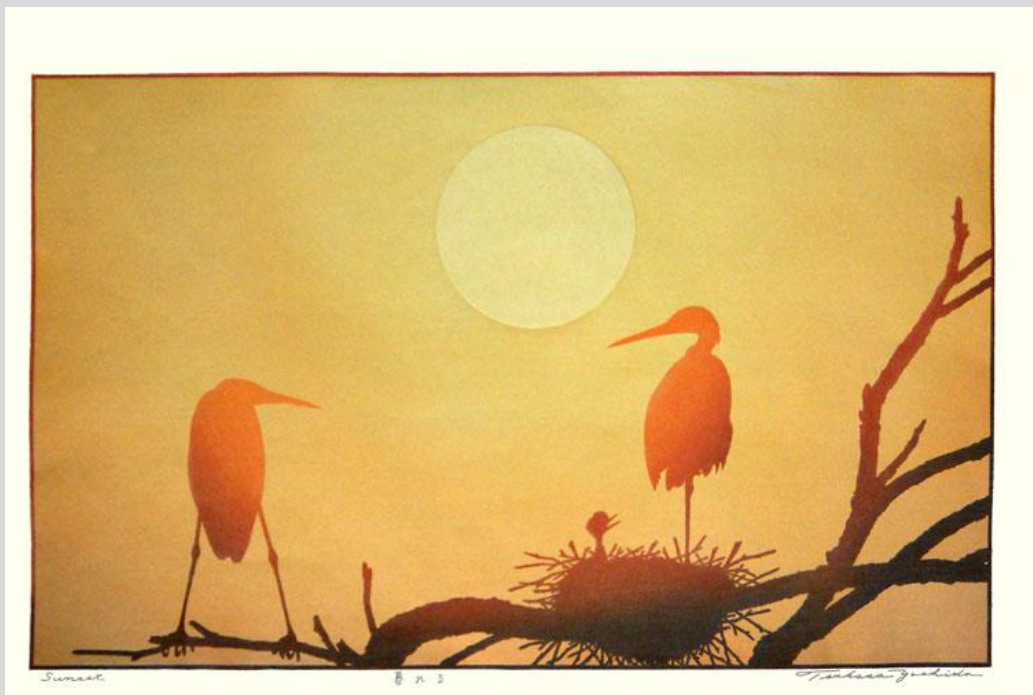
This virtual exhibition presents examples of woodblock-printed bird art produced since 1950. A print by each of one-hundred artists represented in the Reader Collection of Japanese Art is included in the exhibition. Prints are arranged by the level of accuracy used by the artist to depict the bird subject, starting with the most accurate. Only a few artists (prints 1-10) depicted birds objectively (i.e., accurate shape and color). More artists (prints 11-68) depicted birds semi-objectively (i.e., semi-accurate shape and [or] color) while others (prints 69-100) depicted birds subjectively (i.e., inaccurate shape and color). The predominance of semi-objective and subjective depictions of birds in these prints reflects their purpose – to entertain.

For each print the name of the bird depicted is given along with the name of the artist, print title (if any) and print size.

1 Ural owl (*Strix uralensis*) by **Tōshi Yoshida**, entitled two owls, 555 x 375 mm



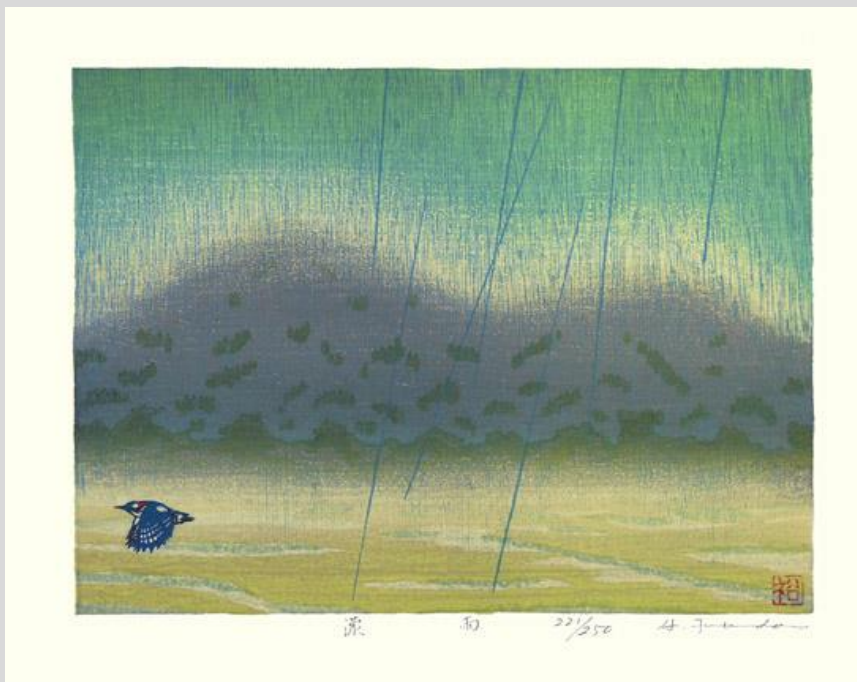
2 Egret (*Egretta* sp.) by **Tsukasa Yoshida**, entitled sunset, 480 x 350 mm



3 Whooper swan (*Cygnus cygnus*) by **Fumio Kitaoka**, entitled swans on icefield, 925 x 635 mm



4 White-backed woodpecker (*Dendrocopos leucotos*) by **Hirokazu Fukuda**, entitled gentle rain, 325 x 250 mm



5 Narcissus flycatcher (*Ficedula narcissina*) by **Shizuo Ashikaga**, entitled narcissus flycatcher, 305 x 440 mm



6 Indian peafowl (*Pavo cristatus*) by **Okiie Hashimoto**, 330 x 440 mm



7 Domestic fowl (*Gallus gallus*) by **Yasuo Matsunaga**, entitled waiting for a favorable chance, 175 x 220 mm



時之待→ 1983 47/200 松永社

8 Mute swan (*Cygnus olor*) by **Ray Morimura**, entitled mute swan, 140 x 160 mm



白鳥 198 1/30 Ray Morimura 松永社

9 Greater-spotted woodpecker  
(*Dendrocopos major*) by **Yasu Katō**, 235 x  
325 mm



10 Oriental greenfinch (*Carduelis sinica*) by **Mihoko Kasamatsu**,  
entitled early spring, 320 x 240 mm



11 Blakiston's fish-owl (*Ketupa blakistoni*) by **Keisaburō Tejima**, entitled owl's lake – winter moon, 450 x 610 mm



12 Long-tailed duck (*Clangula hyemalis*) by **Izumi Fujita**, entitled between the waves – long-tailed duck, 320 x 400 mm





13 **Cormorant**

(*Phalacrocorax* sp.) by  
Masaharu Aoyama, 415 x  
300 mm



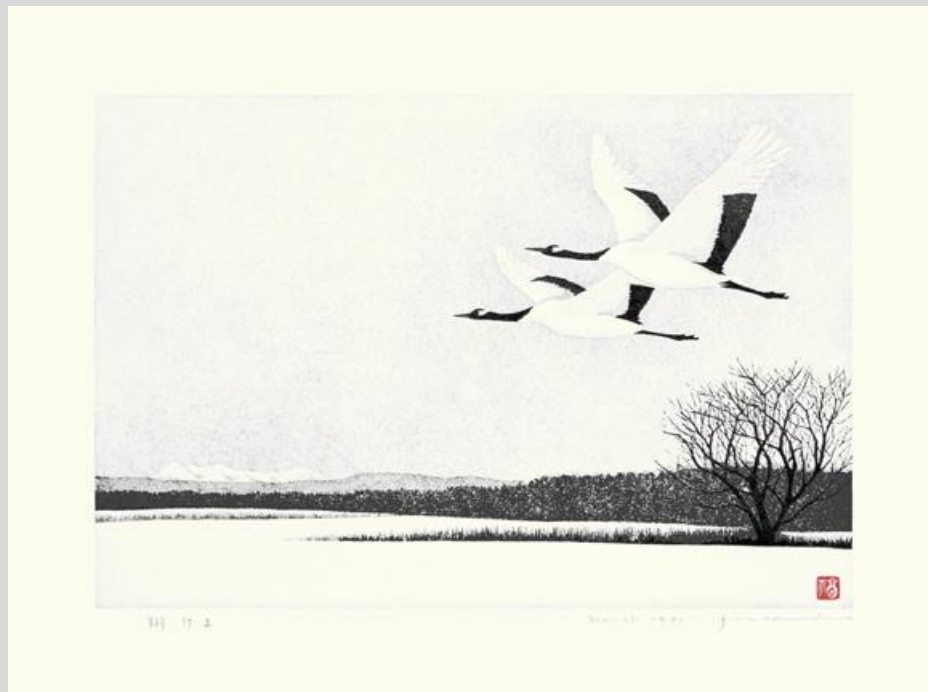
14 Little ringed plover  
(*Charadrius dubius*) by  
**Gyōjin Murakami**, entitled  
little ringed plover, 485 x  
330 mm



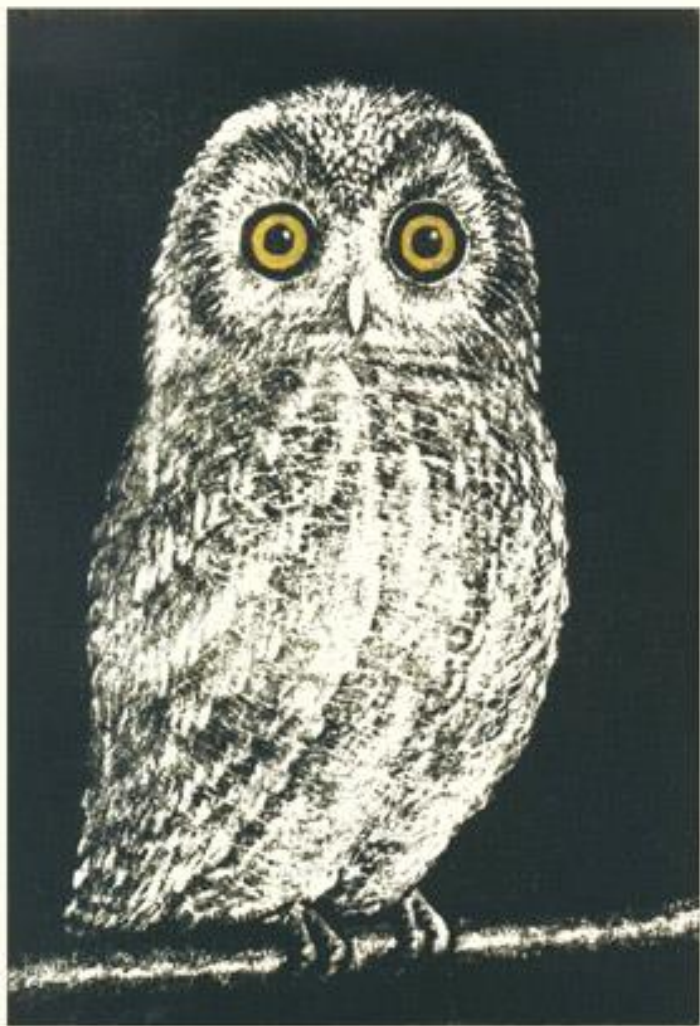
15 Canada goose (*Branta canadensis*) by **Gihachirō Okuyama**, 245 x 120 mm



16 Red-crowned crane (*Grus japonensis*) by **Tadashirō Fukui**, entitled fly, 310 x 230 mm



17 Ural owl (*Strix uralensis*) by **Takashi Hirose**, entitled Ural owl, 150 x 200 mm



11/122 コウロウ Takashi Hirose

18 Cormorant (*Phalacrocorax* sp.) by **Shirō Kasamatsu**, entitled cormorant group, 275 x 400 mm



うみうのむれ

山崎 淳一

19 Ural owl (*Strix uralensis*) by **Mikio Ohkawa**, entitled Ural owl, 155 x 210 mm



7/180 7704 ← 4208.2

20 Ural owl (*Strix uralensis*) by **Fū Takenaka**, entitled happiness, 230 x 320 mm



4/25 6202 ← 4208.2

21 Ural owl (*Strix uralensis*) by **Kōhō Ōuchi**, entitled blooming,  
180 x 180 mm



22 Domestic fowl (*Gallus gallus*) by **Hiromu Satō**, 115 x 160 mm



23 Large-billed crow (*Corvus macrorhynchos*) by **Yoichi Nakano**, entitled crow B, 180 x 180 mm



24 Large-billed crow (*Corvus macrorhynchos*) by **Masaaki Terada**, 480 x 385 mm



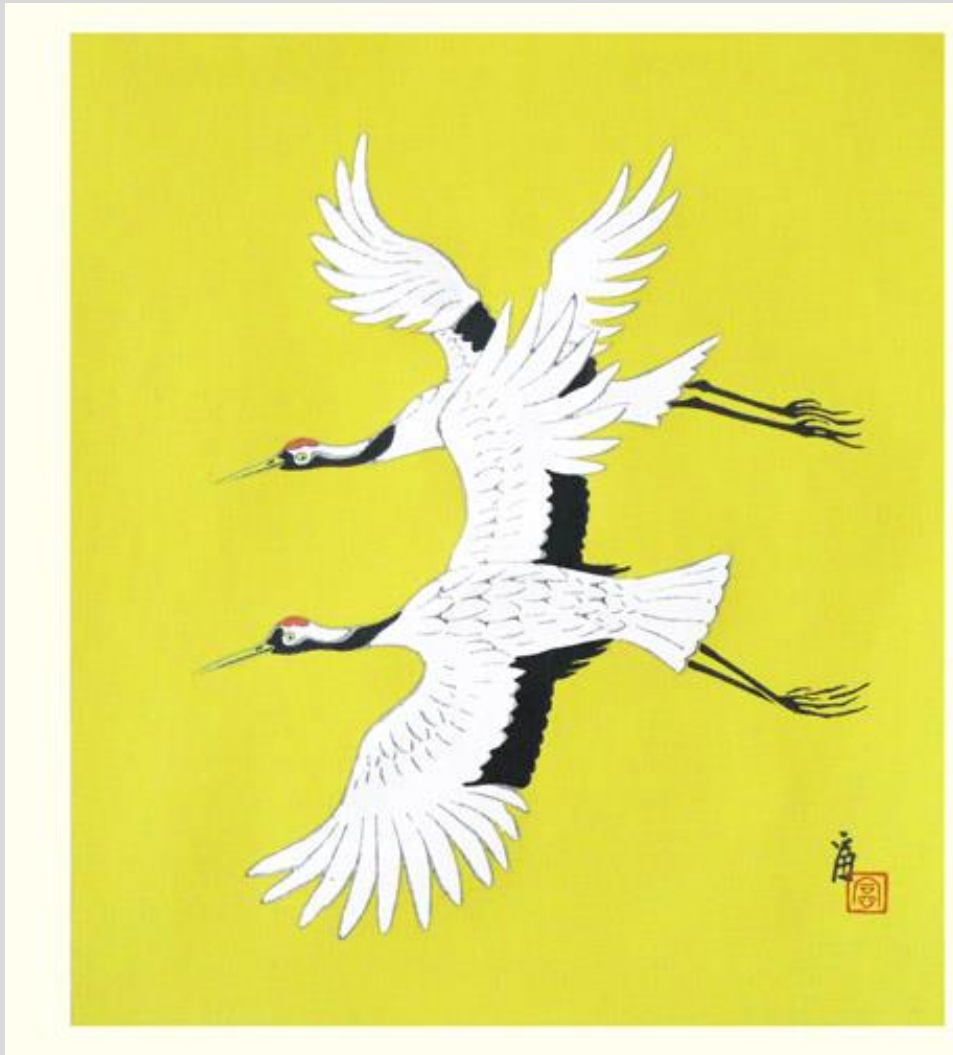
25 Yellow-crested cockatoo (*Cacatua sulphurea*) by **Eiichi Kotozuka**, entitled Chinese quince and yellow-crested cockatoo, 300 x 450 mm



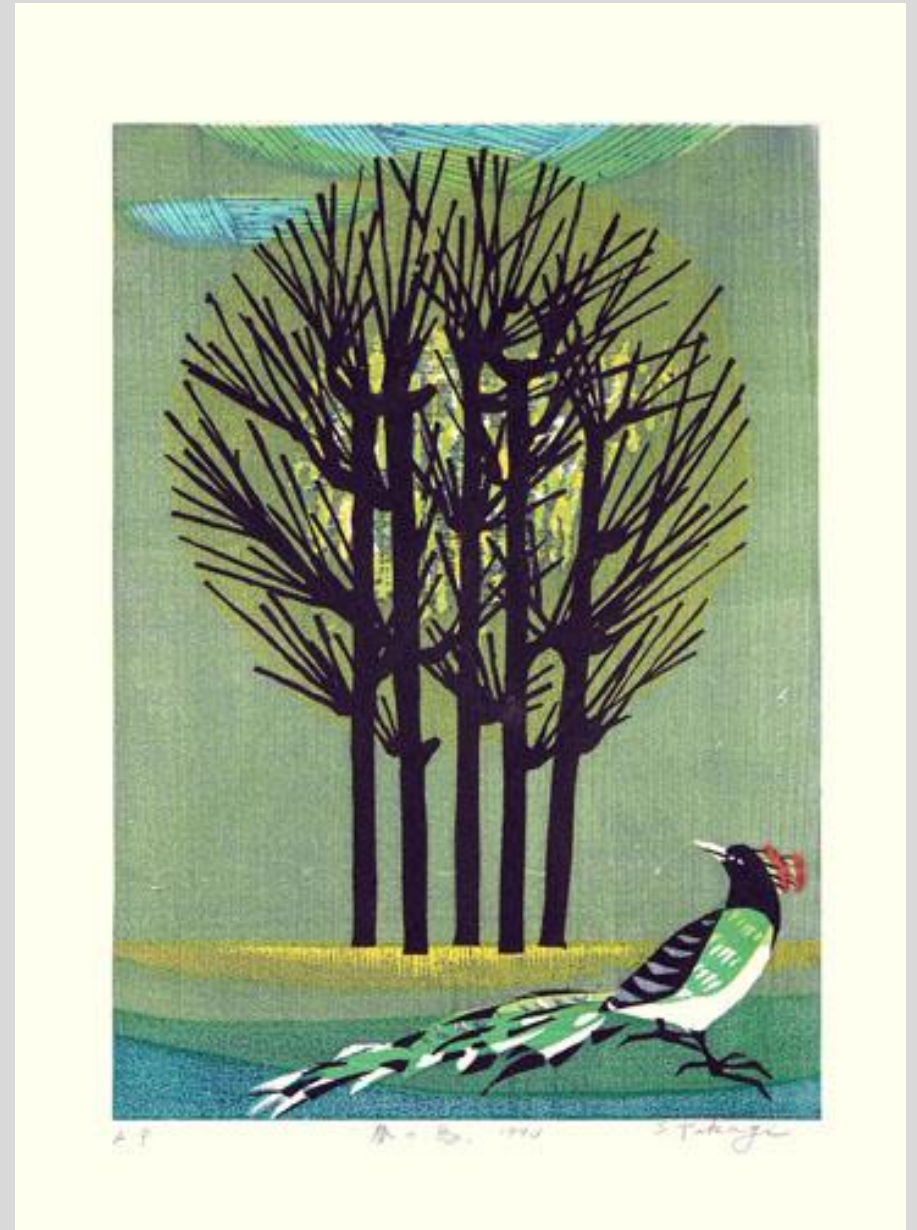
26 Cockatoo (*Cacatua* sp.) by **Kazuhiko Sanmonji**, entitled my dreams, 270 x 350 mm



27 Red-crowned crane (*Grus japonensis*) by Tomikichirō Tokuriki, 275 x 295 mm



28 Indian peafowl (*Pavo cristatus*) by Shirō Takagi, entitled spring bird, 310 x 430 mm





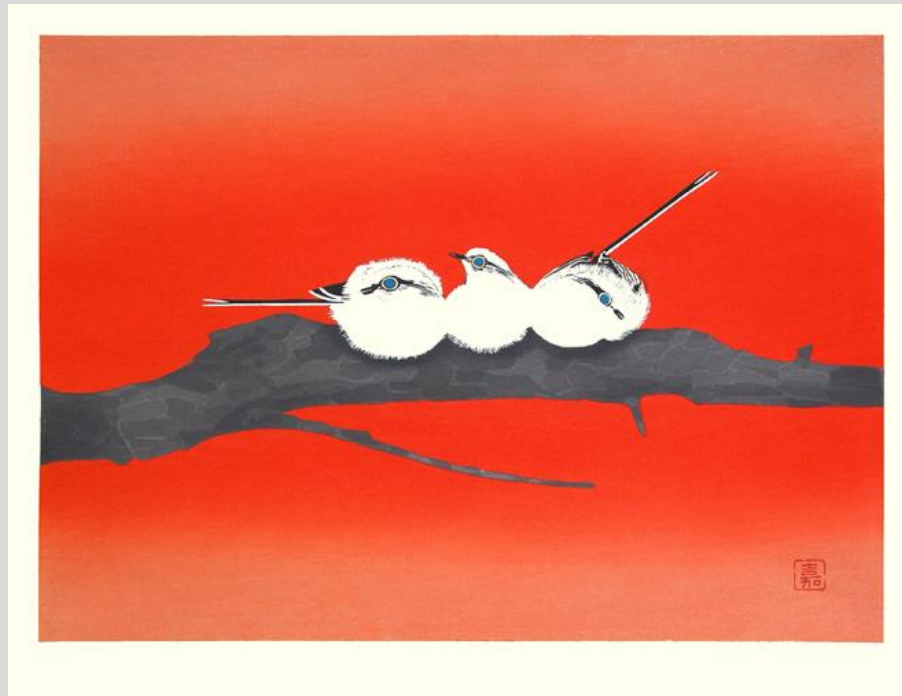
29 Red-crowned crane (*Grus japonensis*) by Yasushi Ōmoto, 160 x 105 mm



30 Rock dove (*Columba livia*) by Jun'ichirō Sekino, 180 x 140 mm



31 Long-tailed tit  
(*Aegithalos caudatus*) by  
**Yoshiyuki Nakano**, 360 x  
275 mm



32 Mandarin duck (*Aix galericulata*) by **Kaoru Kawano**, 420 x 290 mm



33 Indian peafowl (*Pavo cristatus*) by **Shūzō Ikeda**, 190 x 175mm



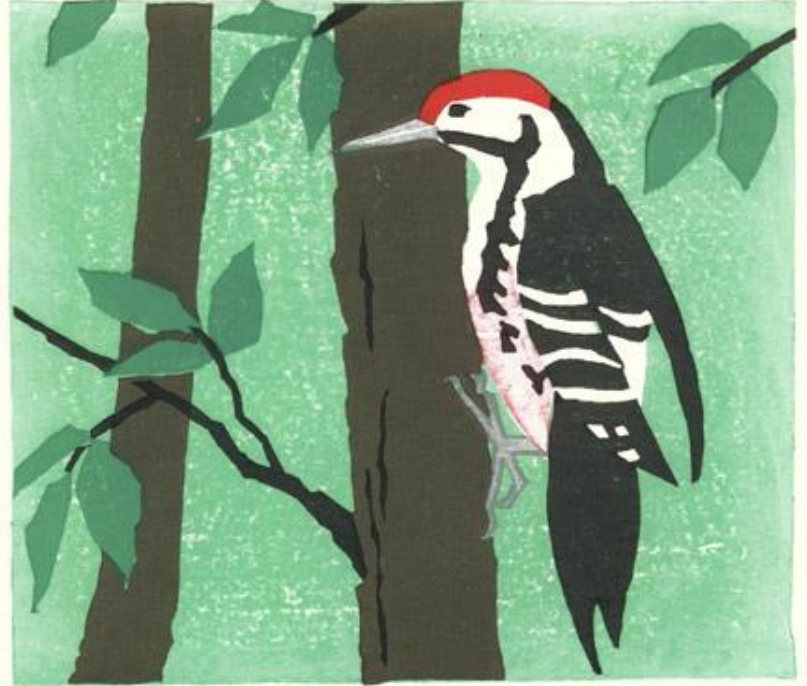
34 Daurian redstart (*Phoenicurus aureoreus*) by **Natsuo Ikegami**, 110 x 110 mm



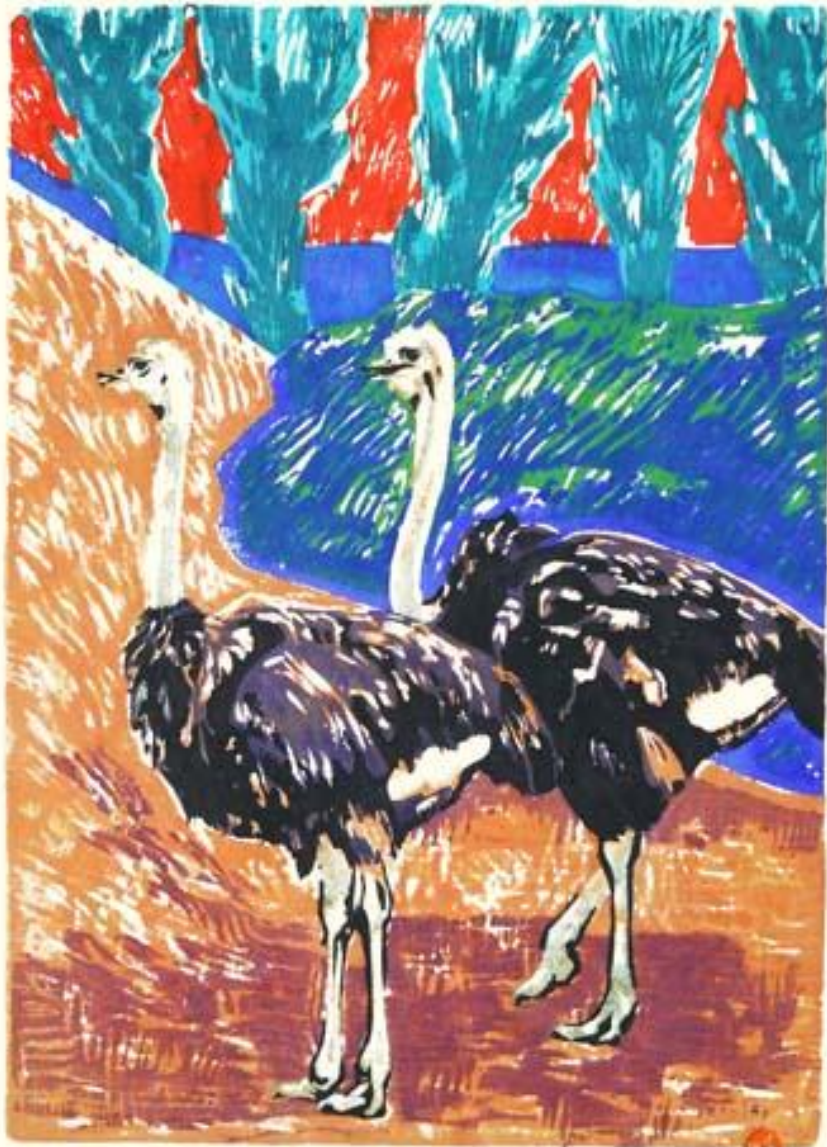
35 Bull-headed shrike (*Lanius bucephalus*) by **Yutaka Ōkubo**, 150 x 125 mm



36 White-backed woodpecker (*Dendrocopos leucotos*) by **Hajime Ōkubo**, 150 x 125 mm



37 Ostrich (*Struthio camelus*) by Hiroshi Ueda, 285 x 375 mm



38 Common cuckoo (*Cuculus canorus*) by Tomoko Kyūki, entitled bird's time – cuckoo, 100 x 150 mm



鳥の時間 - カッコウ -  
14/20 T. Kyūki 2010

39 Scops owl (*Otus sp.*) by Kan Kozaki, 220 x 330 mm



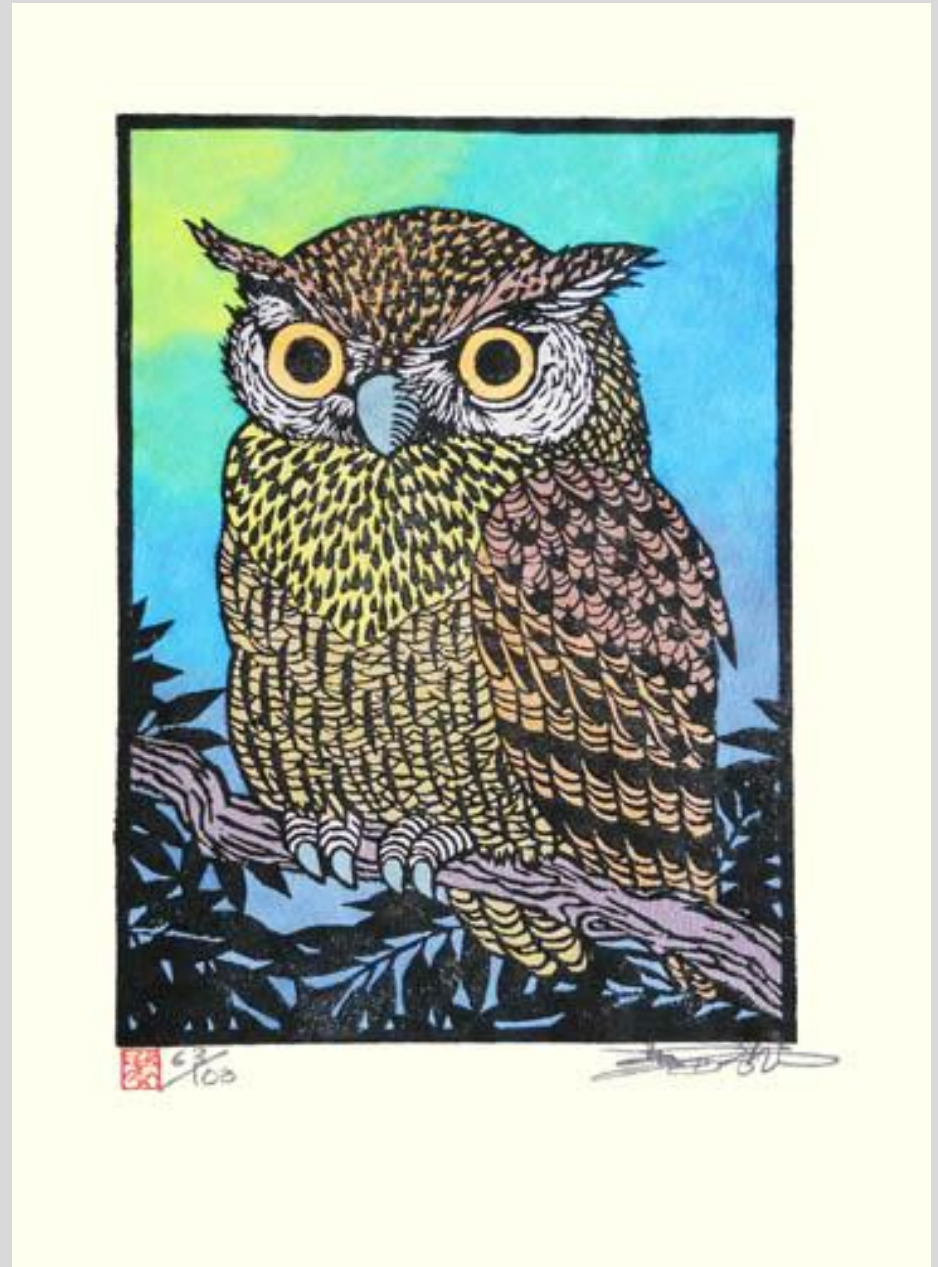
40 Scops owl (*Otus sp.*) by Iwao Akiyama, 250 x 300 mm



41 Scops owl (*Otus* sp.) by **Manjirō Asaka**, 280 x 400 mm



42 Scops owl (*Otus* sp.) by **Makoto Yumeda**, entitled *silence*, 300 x 410 mm



43 Scops owl (*Otus* sp.) by  
**Kunio Satō**, entitled owl,  
290 x 185 mm



44 Red-crowned crane (*Grus japonensis*) by  
**Yūzaburō Kawanishi**,  
entitled flight, 175 x 130  
mm





45 Domestic fowl (*Gallus gallus*) by **Shun'ichi Kadowaki**, entitled self-carved woodcut rooster, 240 x 270 mm



46 Cormorant (*Phalacrocorax* sp.) by **Totsurō Shimada**, 320 x 335 mm



47 Domestic fowl (*Gallus gallus*) by **Shigeru Takaku**,  
150 x 200 mm



48 Barn swallow (*Hirundo rustica*) by **Yūkichi Utakewa**, 165  
x 190 mm



49 Domestic fowl (*Gallus gallus*) by **Seikō Kawachi**, entitled getting up 1, 180 x 250 mm



8/50

104 22 (17) Seikō Kawachi

50 Scops owl (*Otus* sp.) and pygmy woodpecker (*Dendrocopos kizuki*) by **Kiyomi Moji**, entitled home in the forest, 215 x 240 mm



8/50

— 森の家 —

Kiyomi Moji

51 Brown-eared bulbul  
(*Ixos amaurotis*) by  
**Katsuyuki Nishijima**, 330 x  
255 mm



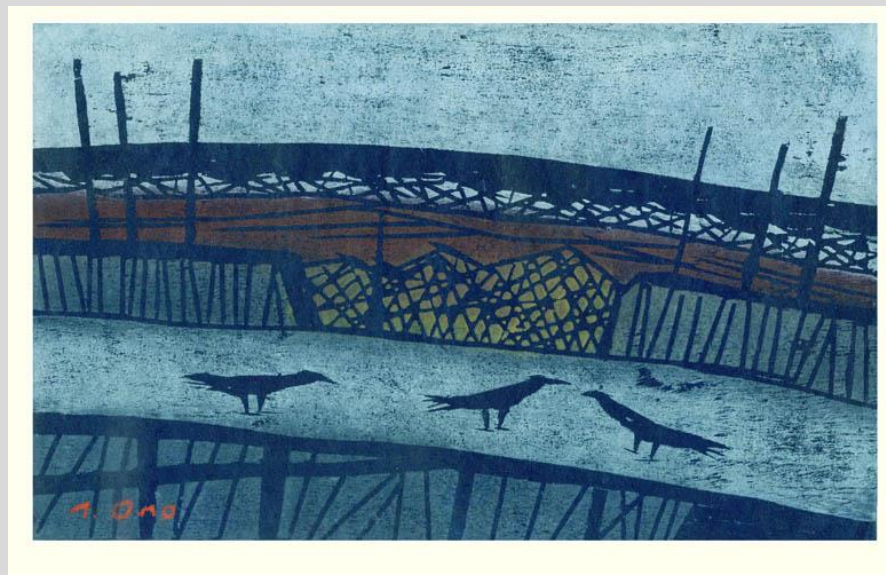
52 Duck (*Anas* sp.) by  
**Susumu Yamaguchi**, 585 x  
370 mm



53 Crane (*Grus* sp.) by **Yūji Watanabe**, entitled flying-star, 715 x 575 mm



54 Large-billed crow (*Corvus macrorhynchos*) by **Tadashige Ono**, entitled shallow beach, 235 x 155 mm

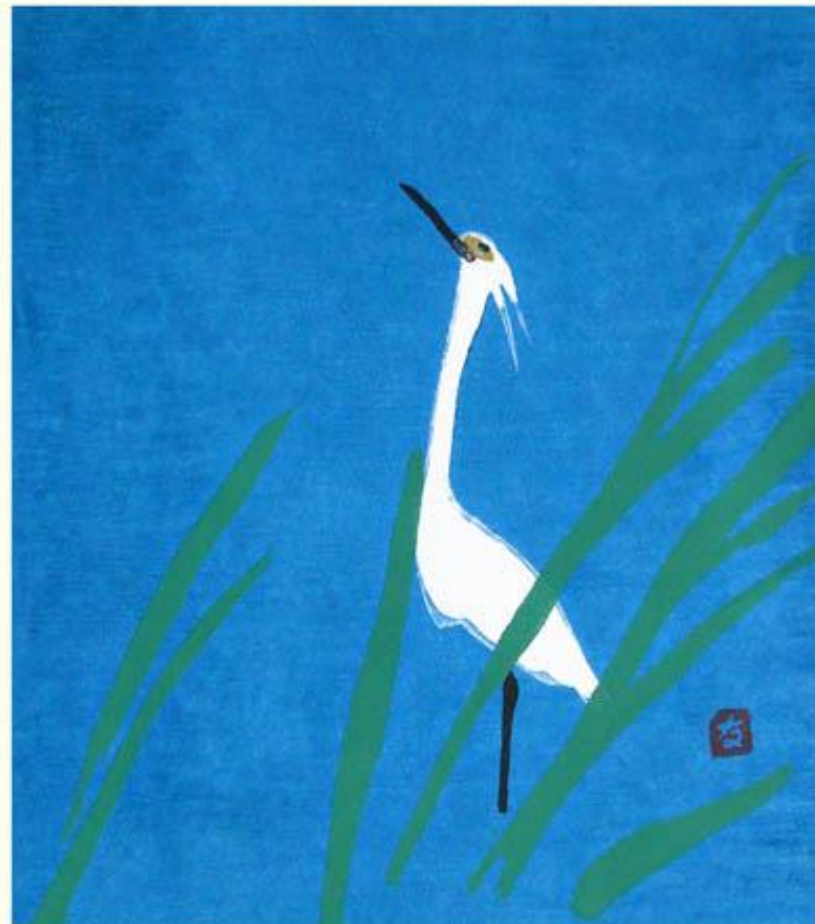


55 Azure-winged magpie (*Cyanopica cyana*) by **Waichi Hayashi**, entitled morning snow, 240 x 280 mm



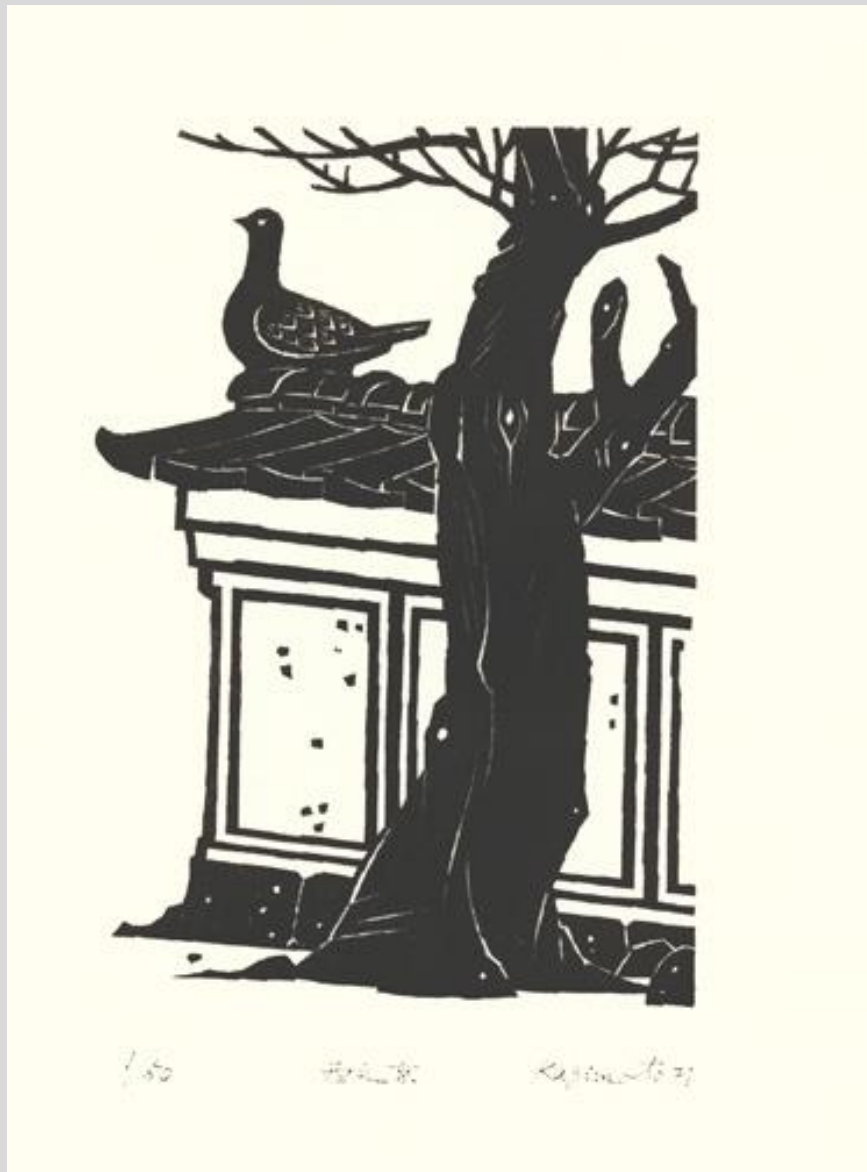
4/80 雪の朝 Waichi Hayashi

56 Little egret (*Egretta garzetta*) by **Tomonosuke Ogō**, entitled little egret, 285 x 315 mm

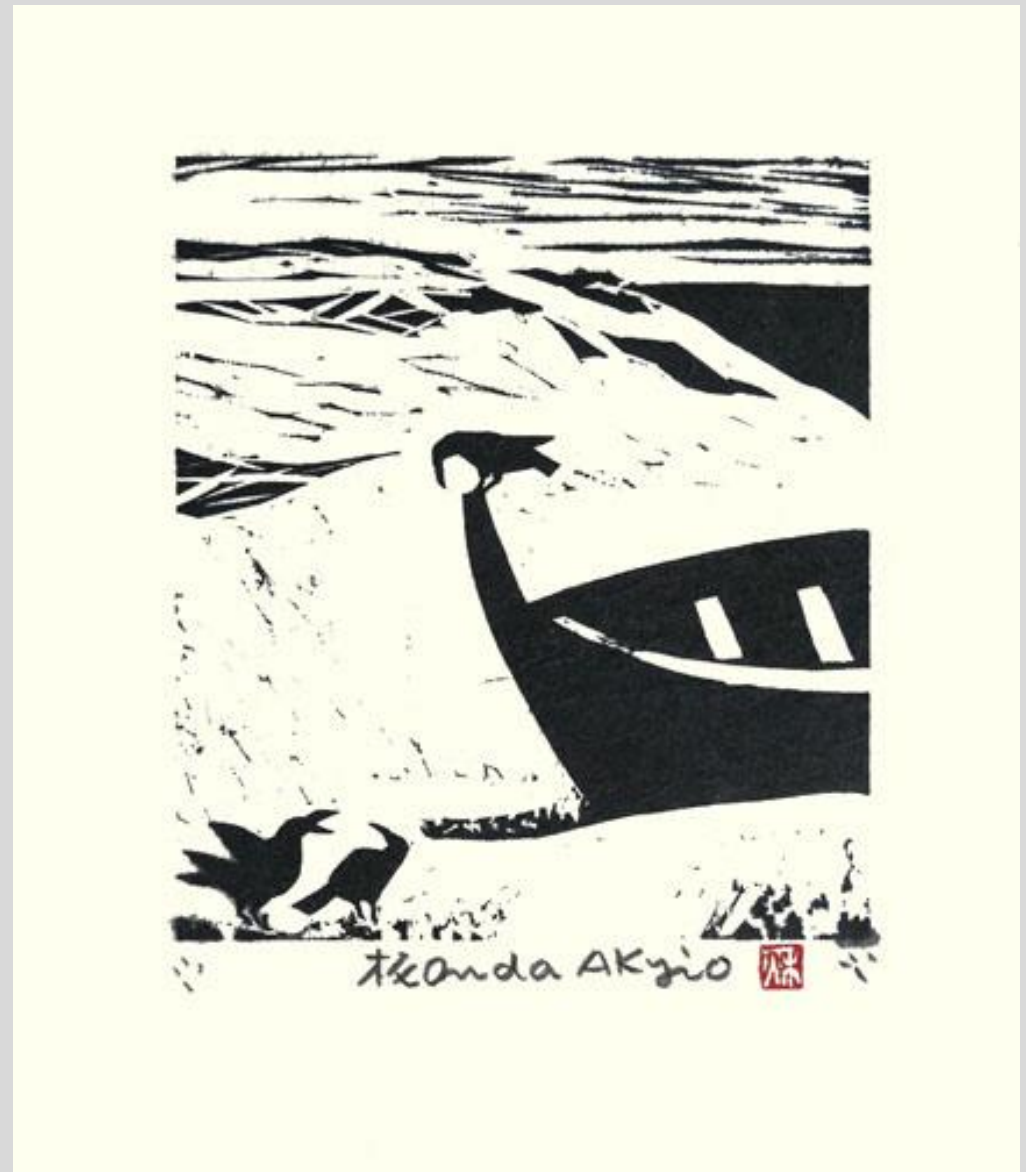


8/20

57 Rock dove (*Columba livia*) by **Yutaka Kagimoto**,  
entitled Nishino Kyōtō, 160 x 220 mm



58 Large-billed crow (*Corvus macrorhynchos*) by **Akyio Onda**, 300 x 340 mm



59 Oriental turtle-dove (*Streptopelia orientalis*) by **Morikazu Maeda**, entitled flowers turtle-dove, 300 x 200 mm



60 Scops owl (*Otus* sp.) by **Masahiro Hayashi**, entitled paradise smile return trip, 640 x 480 mm

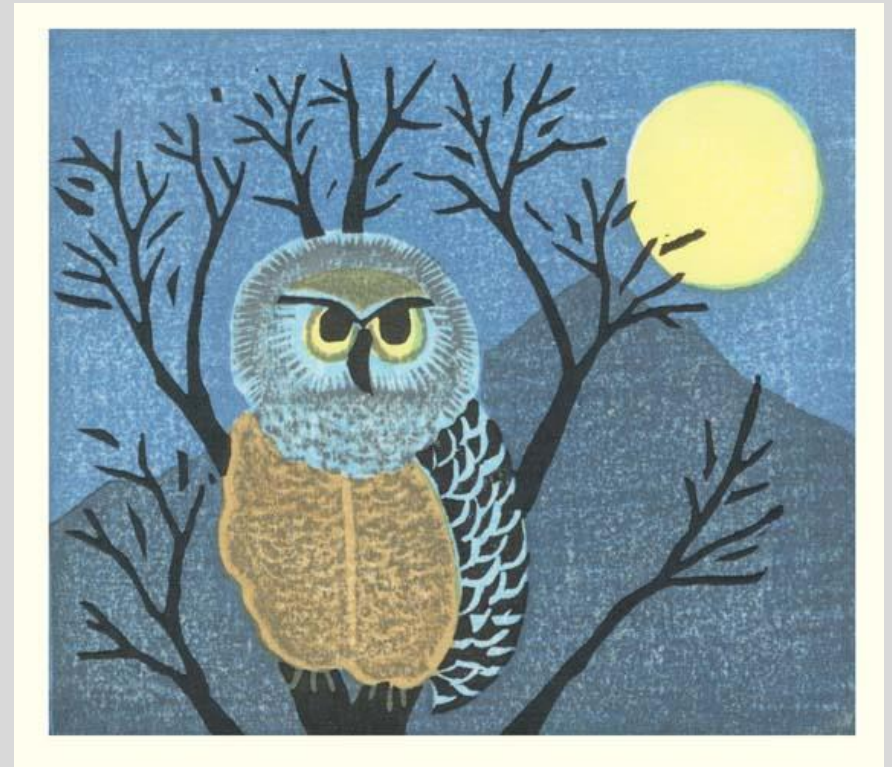




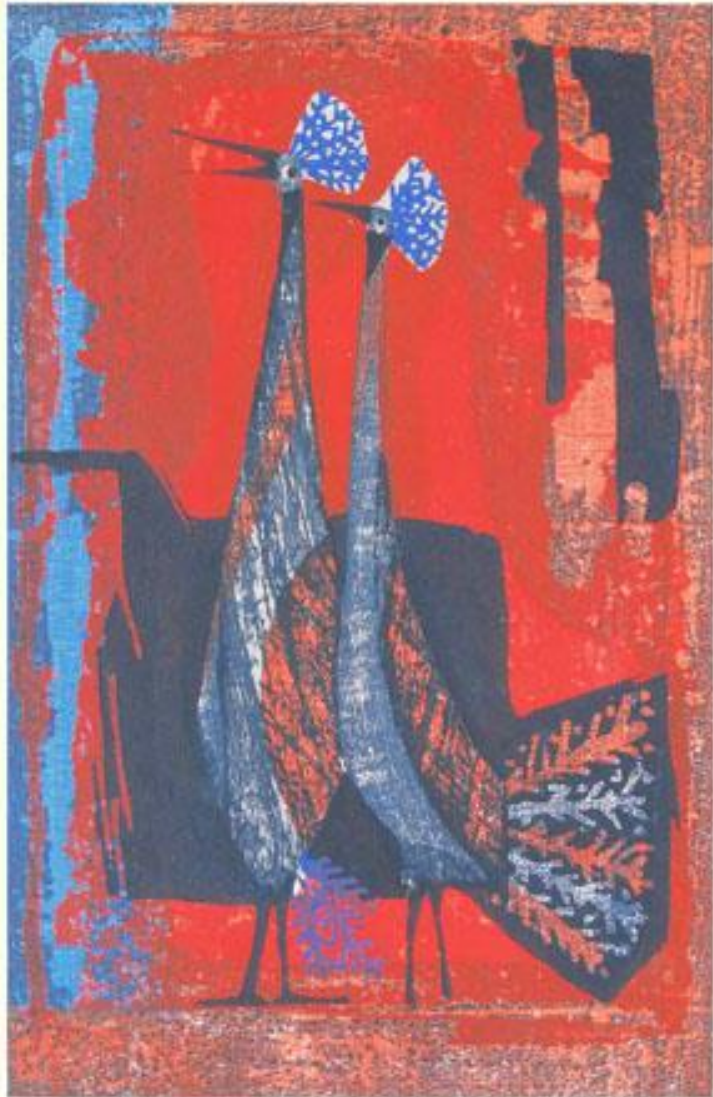
61 Rock dove (*Columba livia*) by **Hideo Hagiwara**, entitled migratory bird, 210 x 175 mm



62 Ural owl (*Strix uralensis*) by **Kōzō Onishi**, 125 x 110 mm



63 Indian peafowl (*Pavo cristatus*) by **Tamami Shima**,  
entitled avec, 305 x 440 mm



64 Brown shrike (*Lanius cristatus*) by **Yoko Funamoto**,  
entitled forest spring in the afternoon, 285 x 390 mm



65 Crested ibis (*Nipponia nippon*) by Shin'ichi Takahashi, 285 x 345 mm



65/150 Shin'ichi Takahashi

66 Large-billed crow (*Corvus macrorhynchos*) by Hiroko Izumi, entitled early afternoon, 240 x 320 mm



4/50

「昼下がリ」

Hiroko Izumi



67 Crane (*Grus* sp.) by **Tadashi Nakayama**, 590 x 840 mm



1958 Tadashi Nakayama

68 Azure-winged magpie (*Cyanopica cyana*) by **Tomoo Inagaki**, 440 x 560 mm



69 Unidentified birds by **Akiko Ohba**, entitled strange bird trainer, 180 x 175 mm



70 Dodo bird (*Raphus cucullatus*) by **Hideshi Yoshida**, entitled Sherlock dodo, 150 x 150 mm



71 Rock dove (*Columba livia*) by **Makoto Ueno**, 635 x 485 mm



72 Goose (*Anser* sp.) by **Reika Iwami**, entitled water fantasy E, 510 x 345 mm



73 Scops owl (*Otus* sp.) by **Gashū Fukami**, entitled surrounded in green, 230 x 310 mm



70/100

緑の中

gashu

74 Unidentified bird by **Gorō Kumagai**, 405 x 525 mm



74

1960

Gorō Kumagai

75 Brown-eared bulbul (*Ixos amaurotis*) by **Tatsuteru Kimijima**, entitled bird of fortune, 210 x 295 mm



76 Domestic fowl (*Gallus gallus*) by Jōichi Hoshi, entitled blue bird, 195 x 180 mm





77 Ural owl (*Strix uralensis*) by **Kiyoharu Yamada**,  
entitled snow, 285 x 375 mm



78 Unidentified bird by **Toyohide Akiyama**, entitled my  
blue bird, 240 x 310 mm



79 Gull (*Larus* sp.) by **Rokushū Mizufune**, entitled seagull,  
225 x 250 mm



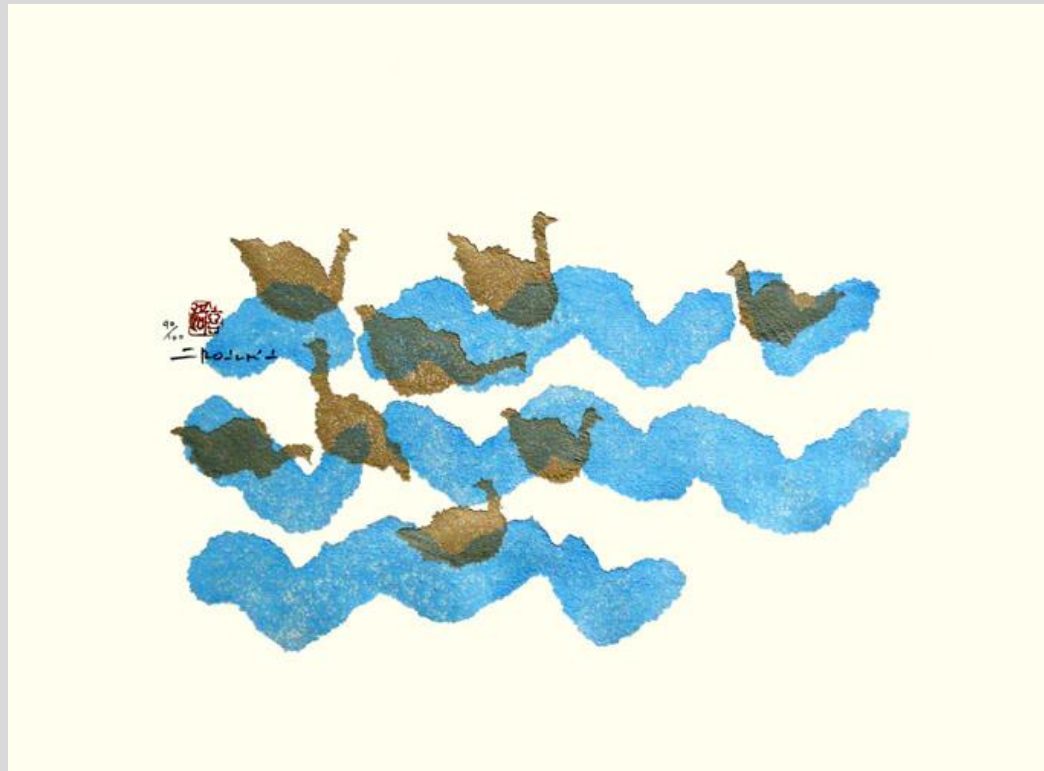
4/5. 鷗 Seagull R. Mizufune

80 Unidentified bird by **Kunihiro Amano**, entitled morning  
31, 170 x 230 mm

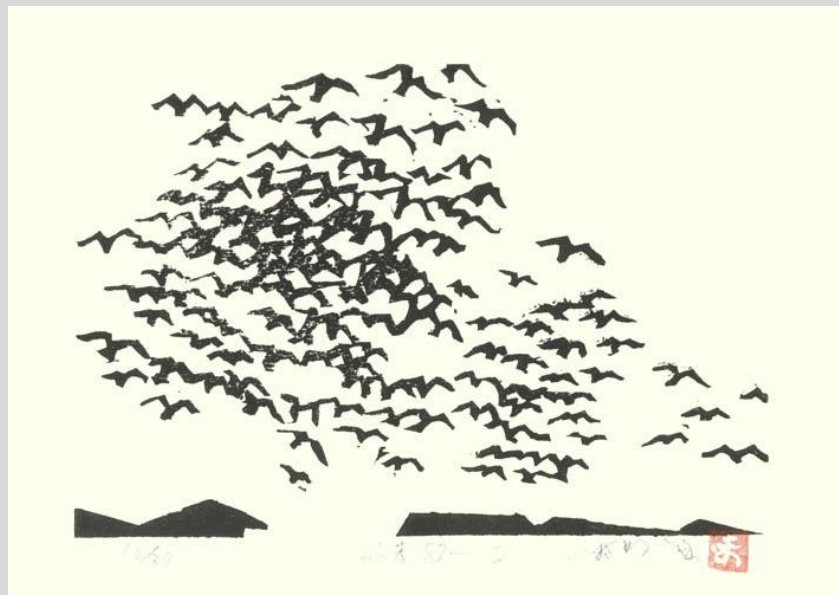


morning 31 4/30 K. Amano

81 Swan (*Cygnus* sp.) by  
**Kiyonori Kuriki**, entitled  
play, 450 x 330 mm



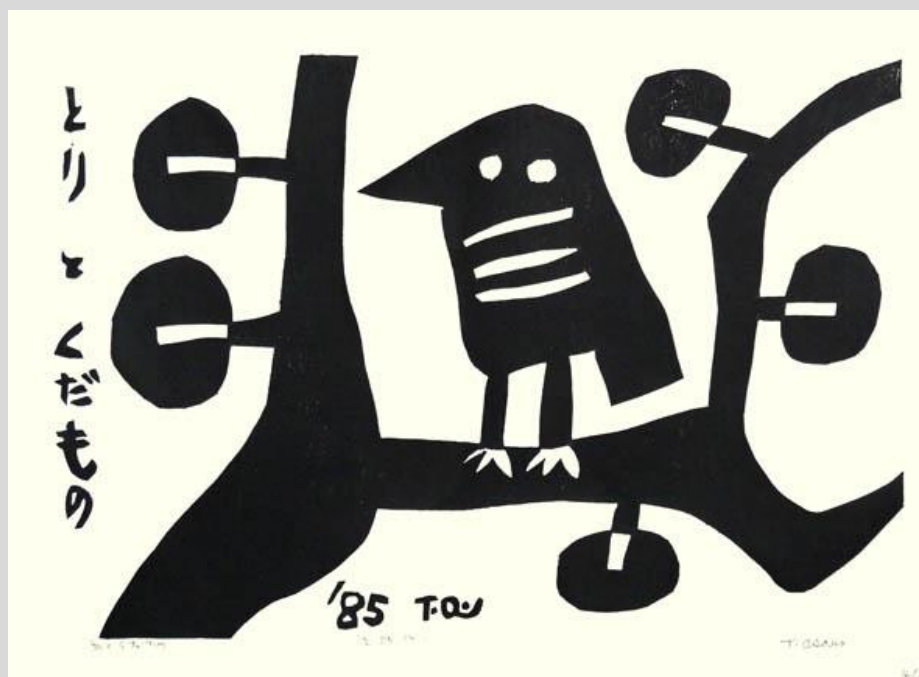
82 Unidentified bird by  
**Masanori Katsuyama**,  
entitled come flying, 200 x  
140 mm



83 Hawk (*Accipiter* sp.) by  
**Shiko Munakata**, 345 x 305  
mm



84 Unidentified bird by  
**Takeji Asano**, entitled bird  
and fruit, 400 x 295 mm



85 Unidentified bird by **Yasuko Ōnishi**, entitled winter's day, 460 x 590 mm



85

冬の日

Yasuko Ōnishi

86 Owl (Family Strigidae) by **Motoi Ōi**, entitled turn-a-face owl, 355 x 455 mm



191 / 250

Motoi Ōi

87 Owl (Family Strigidae) by **Fumiaki Fukita**, entitled child sitting many days, 605 x 470 mm



88 Duck (*Anas* sp.) by **Yoshiharu Kimura**, entitled returning birds, 715 x 520 mm



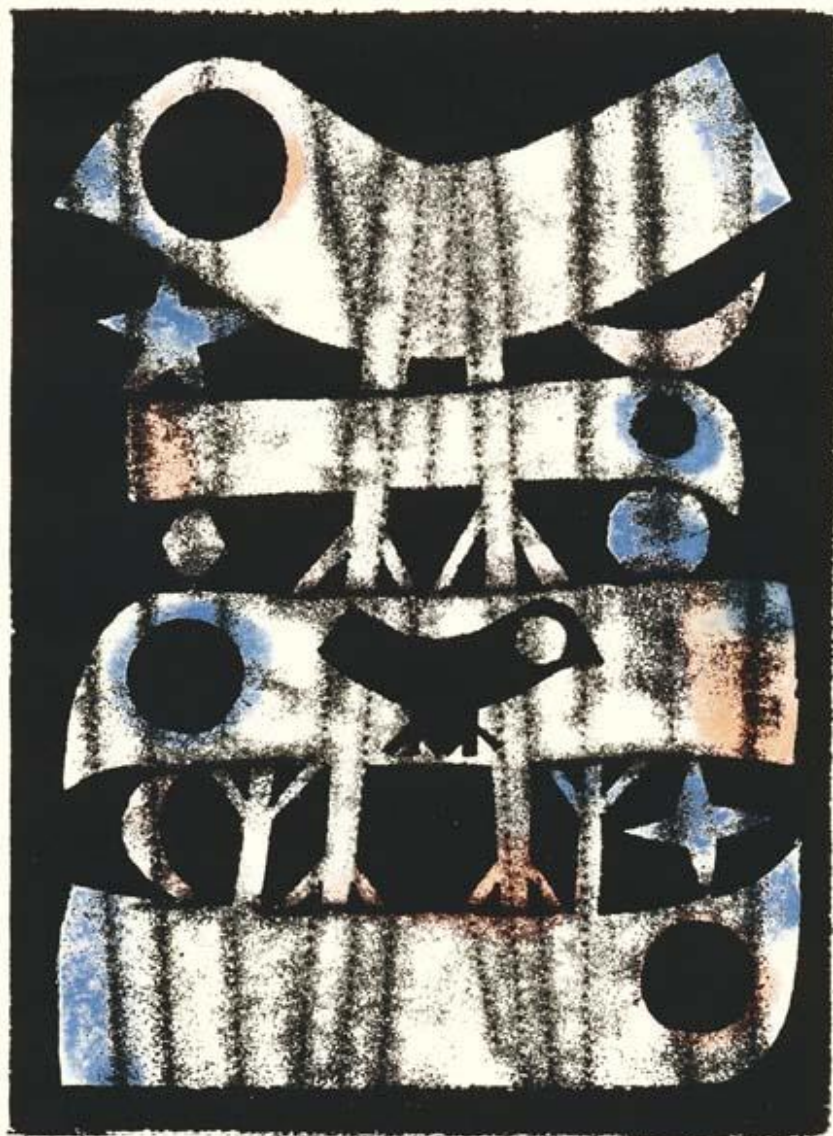
89 Unidentified bird by **Yoshio Kanamori**, 145 x 125 mm



90 Japanese bush-warbler (*Cettia diphone*) by **Kieko Tsurusawa**, 150 x 125 mm



91 Unidentified bird by **Yasuhide Kobashi**, entitled birds at night, 195 x 255 mm



No. 16/50 Birds at night Yas. Kobashi

92 Unidentified bird by **Fujio Nishitani**, 180 x 240 mm



Fujio Nishitani



93 Unidentified birds by **Takeo Takei**, 145 x 125 mm



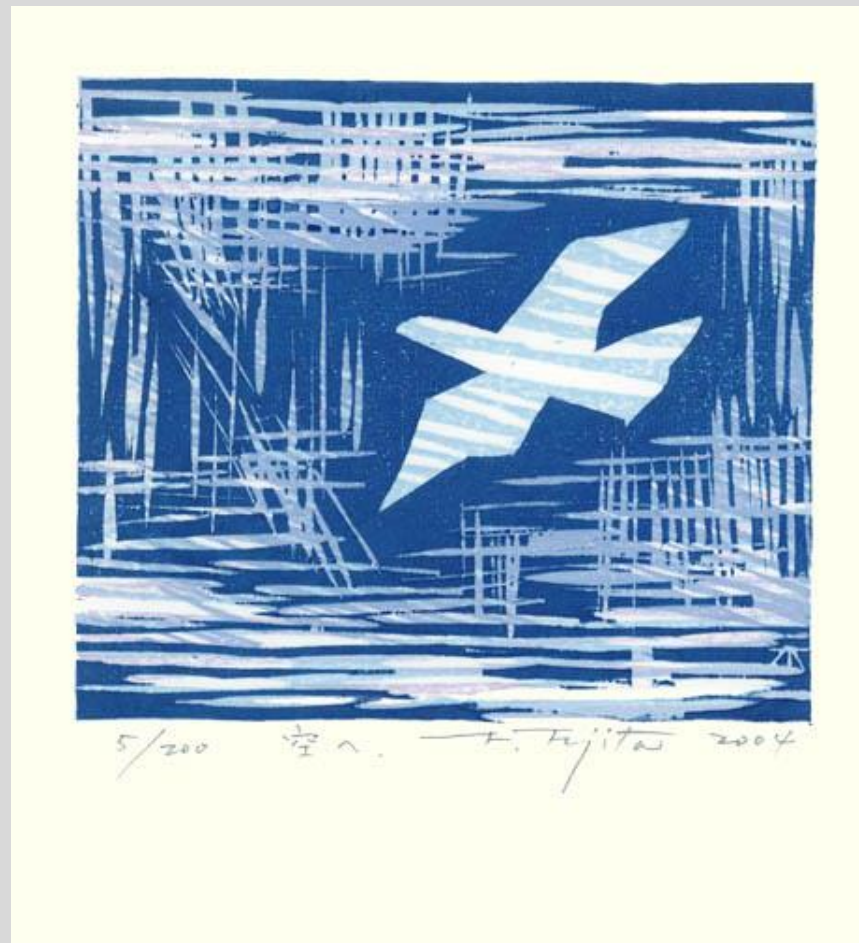
94 Unidentified bird by **Fumiko Odajima**, 140 x 140 mm



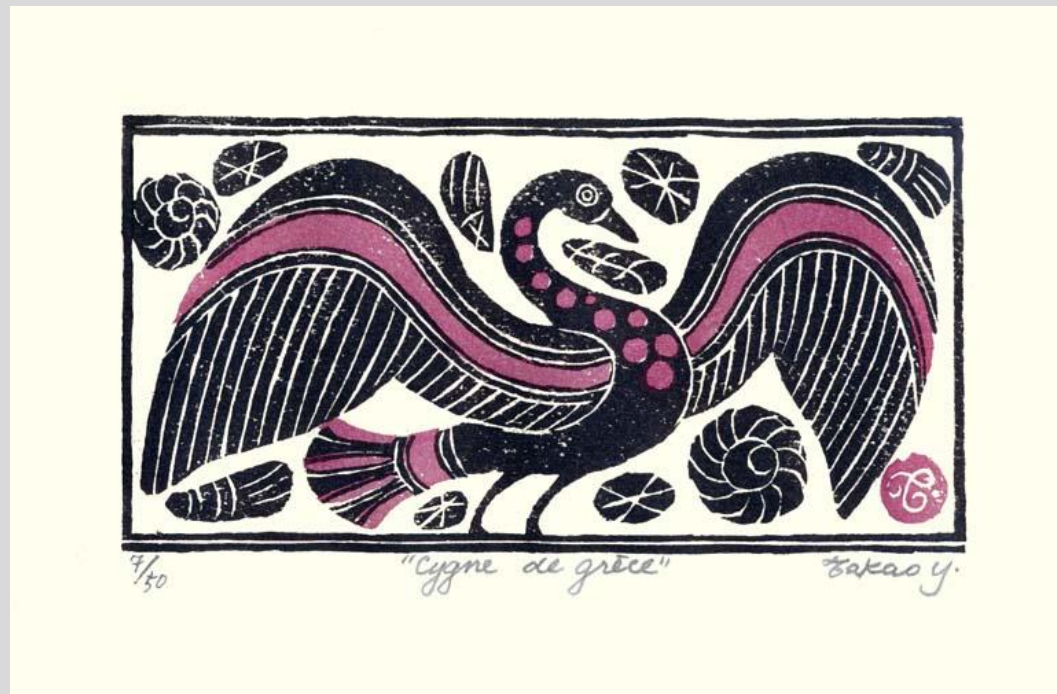
95 Unidentified bird by **Umetarō Azechi**, 125 x 115 mm



96 Unidentified bird by **Fumio Fujita**, entitled to the sky, 140 x 160 mm



97 Swan (*Cygnus* sp.) by  
**Takao Yamazaki**, entitled  
cygne de grèce (greek swan),  
245 x 160 mm



98 Quetzal  
(*Pharmomachrus* sp.) by  
**Toshi Imai**, 165 x 220 mm



99 Domestic fowl (*Gallus gallus*) by **Sakio Fujiwara**, entitled bird A, 240 x 310 mm



100 Blue-and-white flycatcher (*Cyanoptila cyanomelana*) by **Mokurei Nakagawa**, 130 x 180 mm



[Back to Exhibitions](#)